



Global Parts, Inc.



POWERED BY



HEAVY VEHICLE PARTS

# HEAVY-DUTY SPECIALISTS

SUMMER ISSUE



Call your designated sales  
representative for more information.

**PROMO PRICES INSIDE!**

*For a limited time.  
See inside for details.*



# STRONG PARTNERSHIPS. STRONGER RESULTS.

Since 2007, we've been on a mission to keep businesses moving by delivering premium parts and services across a wide range of industries. As a division of Genuine Parts Company (GPC), a global leader in automotive and industrial parts and solutions, we have the reach and resources to source engines, transmissions, and components for nearly any fleet — from commercial trucks and mass transit vehicles to emergency services, construction equipment, agriculture, and marine vessels.

With an inventory of over 500,000 parts from over 1,000 of the most trusted suppliers in the industry, you'll always work closely with knowledgeable experts who can get you what you need, when you need it.



# WE BELIEVE IN THE POWER OF UNITY.

Our family of brands has come together to serve you better, ensuring the businesses you trust are now part of something even stronger. **Explore our family of brands.**



**Global  
Parts, Inc.**





# HEAVY-DUTY HITTERS

## SUPPLIER SPOTLIGHT

# *DENSO*

DENSO has been setting the standard in automotive parts since 1949. Known for unmatched quality, reliability, and innovation, DENSO is the brand trusted by top automakers worldwide.

With decades of cutting-edge engineering and a commitment to First Time Fit®, DENSO helps technicians save time and you save money.

Traction U.S. is proud to offer the DENSO brand, bringing proven performance and trusted quality to every job.



DENSO®

# TOP PRODUCTS



## New HD PowerEdge 39PE 12V Starter

#282-0108 #282-0110  
#282-0109 #282-0114

STARTING AT  
**\$325<sup>00</sup>**



## New HD PowerEdge Pad Mount 170A Alternator

#212-0110

STARTING AT  
**\$225<sup>00</sup>**



## New HD PowerEdge J180 Mount 170A Alternator

#212-0101

STARTING AT  
**\$225<sup>00</sup>**

Product availability may vary by location. We can source any item as needed and tailor inventory to meet the unique requirements of your fleet. Prices valid through 9/30/2025.

# HEAVY-DUTY HITTERS

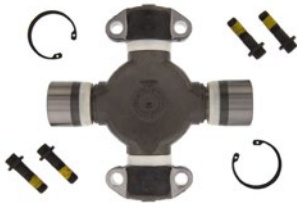
## SUPPLIER SPOTLIGHT



**MERITOR®**

Meritor delivers high-quality parts that are expertly designed and engineered for trusted performance. Count on Meritor for everything from air systems, brakes, and wheels to steel axles, clutches, and suspensions.

## MERITOR® TOP PRODUCTS



### U-Joint Assembly - RPL25

#CP25RPLS1

STARTING AT

**\$190<sup>00</sup>**



### U-Joint Assembly - RPL20

#CP20RPLS1

STARTING AT

**\$132<sup>50</sup>**



### Reman Meritor Q+ 4707 Brake Shoe

#XS5234707QP

STARTING AT

**\$26<sup>50</sup>**



REPRESENTATIVE IMAGE

### Brake Hardware Kit for Meritor Q & Q+

#E4515QH DN

STARTING AT

**\$11<sup>00</sup>**



REPRESENTATIVE IMAGE

### Brake Hardware Kit for Meritor Q & Q+

#E4515QH DB

STARTING AT

**\$10<sup>00</sup>**



### New Meritor Q+ 4707 Brake Shoe Kit

#KSMA23014707QPR

STARTING AT

**\$177<sup>50</sup>**

Product availability may vary by location. We can source any item as needed and tailor inventory to meet the unique requirements of your fleet. Prices valid through 9/30/2025.



# HEAVY-DUTY HITTERS

## SUPPLIER SPOTLIGHT

For over 50 years, Tectran has been a trusted supplier in the heavy-duty truck, trailer, and bus industries, delivering superior air, hydraulic, and electrical components and systems known for their reliability and performance.



## TECTRAN® TOP PRODUCTS



### 16" Dual Tender Kit with 3 Hole Clamp

#9820-2

STARTING AT

**\$42<sup>50</sup>**



### 3-in-1 Airpower Line - 12' Black

#169127S

STARTING AT

**\$161<sup>50</sup>**



### ABS Powercoil - 15' Green

#7ATG542MW

STARTING AT

**\$131<sup>50</sup>**



### Push Lock DOT Male Connector

3/8" Tube - 1/4" NPT  
#PL1368-6B

STARTING AT

**\$5<sup>00</sup>**



### Push Lock DOT Union Connector

1/4" Tube  
#PL1362-4

STARTING AT **\$5<sup>50</sup>**

3/8" Tube  
#PL1362-6

STARTING AT **\$6<sup>50</sup>**

1/2" Tube  
#PL1362-8

STARTING AT **\$7<sup>50</sup>**



### Quick Lock DOT Push-In Swivel Male Elbow

5/8" Tube - 1/2" Thread  
#QL136910D

STARTING AT **\$15<sup>00</sup>**

3/8" Tube - 3/8" Thread  
#QL1369-6C

STARTING AT **\$5<sup>50</sup>**

3/8" Tube - 1/4" Thread  
#QL1369-6B

STARTING AT **\$6<sup>00</sup>**



### Quick Lock DOT Push-In Union Connector

1/4" Tube  
#QL1362-4

STARTING AT **\$4<sup>50</sup>**

3/8" Tube  
#QL1362-6

STARTING AT **\$6<sup>50</sup>**

1/2" Tube  
#QL1362-8

STARTING AT **\$8<sup>50</sup>**

5/8" Tube  
#QL1362-10

STARTING AT **\$16<sup>25</sup>**



### Push Lock DOT Swivel Male Elbow

3/8" Tube - 1/4" NPT  
#PL1369-6B

STARTING AT **\$9<sup>00</sup>**

3/8" Tube - 3/8" NPT  
#PL1369-6C

STARTING AT **\$10<sup>00</sup>**

Product availability may vary by location. We can source any item as needed and tailor inventory to meet the unique requirements of your fleet. Prices valid through 9/30/2025.



# HEAVY-DUTY HITTERS

## SUPPLIER SPOTLIGHT



Grote Industries is known for innovation, durability, performance, and is a global leader in vehicle lighting and safety systems. From highly visible stop lights to cutting-edge LED technology, Grote continues to set the standard in advanced vehicle system solutions.

## GROTE INDUSTRIES® TOP PRODUCTS



### 2 Pin Flaser

#44530

STARTING AT

**\$12<sup>45</sup>**



### M1 Series LED Clearance Marker Light - Yellow

#45583

STARTING AT

**\$34<sup>25</sup>**



### UltraLink ABS Power Cord - 15' with 12" Lead, Coiled Green

#87101

STARTING AT

**\$83<sup>50</sup>**



### 3-in-1 UltraLink Power Cord & Air Assembly

12' Black

#81-3112

STARTING AT

**\$150<sup>00</sup>**

15' Black

#81-3115

STARTING AT

**\$168<sup>00</sup>**



### G360 LED Remote Work Light with Remote Control

#63H91-5

STARTING AT

**\$450<sup>00</sup>**

Product availability may vary by location. We can source any item as needed and tailor inventory to meet the unique requirements of your fleet. Prices valid through 9/30/2025.



# HEAVY-DUTY HITTERS

## SUPPLIER SPOTLIGHT

**KIT MASTERS**  
FAN CLUTCH EXPERTS

Kit Masters is a leading manufacturer of high-quality, heavy-duty aftermarket components, specializing in fan clutches, thermostats, solenoid valves, belt tensioners, and fan blades.



## KIT MASTERS® TOP PRODUCTS



### Rear Air Fan Clutch, Kysor Style, 2.56" Pilot

#8901N

STARTING AT

**\$369<sup>00</sup>**



### Gold Top Kit 2.56" Pilot Two Pulley Bearings

#14-256

STARTING AT

**\$589<sup>00</sup>**



### 9.5" Fan Clutch Kit Includes Hub & Plate

#9500HP

STARTING AT

**\$543<sup>50</sup>**



### NO-NC Solenoid Valve - 12 Volt

#3282

STARTING AT

**\$167<sup>50</sup>**



### Gold Top 2 Speed Kit - 2.56" / 5" Pilot, 2 Pulley Bearings

#24-256

STARTING AT

**\$860<sup>00</sup>**



### Kysor - Bearing Kit

#8581-01

STARTING AT

**\$116<sup>25</sup>**

Product availability may vary by location. We can source any item as needed and tailor inventory to meet the unique requirements of your fleet. Prices valid through 9/30/2025.



# HEAVY-DUTY HITTERS

## SUPPLIER SPOTLIGHT



NeoBrake is committed to delivering top-tier braking components and wheel-end products, crafted with the highest-grade raw materials and cutting-edge manufacturing practices.

## NEOBRAKE® TOP PRODUCTS



### ▶ Reman Brake Shoe Kit 4707 Q

#NBP23-4707QKIT

STARTING AT

**\$49<sup>50</sup>**



### ▶ New Brake Shoe Kit 4707 Q

#NSNBP23-4707QKIT

STARTING AT

**\$70<sup>50</sup>**



### ▶ Reman Brake Shoe Kit 4711 ES2

#NBP23-4709ES2KIT

STARTING AT

**\$52<sup>50</sup>**



### ▶ Reman Cast Brake Shoe Kit 4515

#NB1088-4515TCASTKIT

STARTING AT

**\$170<sup>00</sup>**



### ▶ New Brake Shoe Kit 4720 Q

#NSNBP23-4720QKIT

STARTING AT

**\$80<sup>50</sup>**



### ▶ New Brake Shoe Kit 4726 ES2

#NSNBP23-4726ES2KIT

STARTING AT

**\$95<sup>00</sup>**

Product availability may vary by location. We can source any item as needed and tailor inventory to meet the unique requirements of your fleet. Prices valid through 9/30/2025.



# HEAVY-DUTY HITTERS

## SUPPLIER SPOTLIGHT

Ranger is a family-owned manufacturing distributor of commercial vehicle braking systems, slack adjusters, rotors and additional HD-Components.

**RANGER**  
**BRAKE®**



## RANGER® TOP PRODUCTS



### Type 30 Brake Chamber

#VC3030

STARTING AT

**\$56<sup>25</sup>**



### Type 30 Long Stroke Brake Chamber

#VC3030LS

STARTING AT

**\$62<sup>00</sup>**



### Premium Type 30 Long Stroke Brake Chamber

#HD3030-LS

STARTING AT

**\$64<sup>50</sup>**



### Clevis Kit - 5/8"-18 with 1/2" Clevis Pin

#HD10015

STARTING AT

**\$2<sup>50</sup>**



### Type 20 Long Stroke Brake Chamber with Welded Clevis

#HD20LSWC-2.25

STARTING AT

**\$46<sup>50</sup>**



### Type 30 Long Stroke Brake Chamber with Welded Clevis

#HD3030LWC-2.25

STARTING AT

**\$80<sup>00</sup>**

Product availability may vary by location. We can source any item as needed and tailor inventory to meet the unique requirements of your fleet. Prices valid through 9/30/2025.

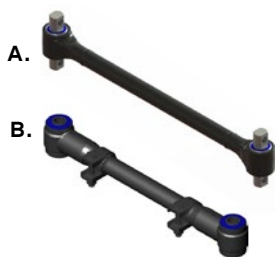
# HEAVY-DUTY HITTERS

## SUPPLIER SPOTLIGHT

# ATRO

ATRO is a U.S.-based manufacturer specializing in high-performance polyurethane parts for heavy-duty trucks and trailers. Their products range from suspension bushings and torque rods to high-temperature engine mounts and are engineered to outperform traditional rubber components.

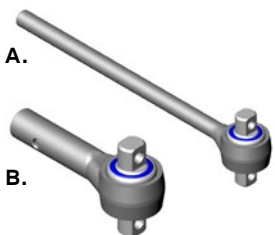
## ATRO® TOP PRODUCTS



### Torque Rod

A. Small Eye 25<sup>9/16</sup>"  
#TR00-41009  
STARTING AT **\$199<sup>25</sup>**

B. Adjustable 19<sup>1/4</sup>"  
#TR53-45305  
STARTING AT **\$91<sup>25</sup>**



### Two-Piece Torque Rod

A. Male End  
#TR75000  
STARTING AT **\$162<sup>75</sup>**

B. Female End  
#TR71000  
STARTING AT **\$143<sup>50</sup>**



### Torque Rod Bushing

#TS38000

STARTING AT

**\$67<sup>25</sup>**

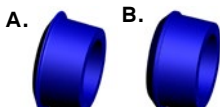


### Trunnion Bushing

#HU10000

STARTING AT

**\$68<sup>50</sup>**



### Polylast Torque Rod Bushing

A. #PL1046  
STARTING AT **\$18<sup>25</sup>**

B. #PL1047  
STARTING AT **\$19<sup>25</sup>**

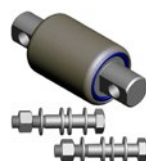


### Equalizer Beam w/ Bushing

#EQ53-35158

STARTING AT

**\$141<sup>25</sup>**

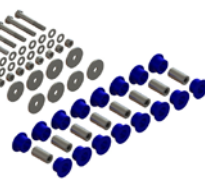
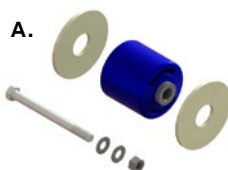


### Bar Pin Bushing Kit

#EB50-21013

STARTING AT

**\$207<sup>00</sup>**

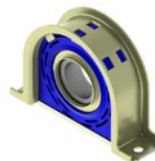


### Lift Axle Bushing Kit

#PB00-26839

STARTING AT

**\$394<sup>00</sup>**

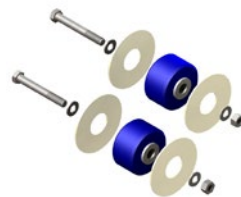


### Carrier Bearing Assembly, Series 1810

#CR00-67825

STARTING AT

**\$122<sup>50</sup>**



### Pivot Bushing Kit, Narrow, Solid (Regular Bolt)

#PB50-36321

STARTING AT

**\$262<sup>00</sup>**



### Shifter Isolator Bushing Kit

#MS99-63399

STARTING AT

**\$35<sup>99</sup>**



### Pivot Bushing

A. w/ Hex Bolt  
#PB50-36000  
STARTING AT **\$160<sup>50</sup>**

B. Anti-Walk  
#PB46-26268  
STARTING AT **\$87<sup>50</sup>**

Product availability may vary by location. We can source any item as needed and tailor inventory to meet the unique requirements of your fleet. Prices valid through 9/30/2025.



# HEAVY-DUTY HITTERS

## SUPPLIER SPOTLIGHT



MEI Corporation is the leading independent U.S. distributor of HVAC components for heavy-duty trucks and off-road equipment, serving industries like forestry, mining, and agriculture.

## MEI® TOP PRODUCTS



**Expansion Valve - Block**

#1600

STARTING AT

**\$25<sup>00</sup>**



**Accumulator - Peterbilt**

#7408

STARTING AT

**\$42<sup>00</sup>**



**Relay - 12V 30/40A**

#1252

STARTING AT

**\$6<sup>00</sup>**



**Receiver Drier**

A. Volvo  
#7159G

STARTING AT **\$27<sup>50</sup>**

B. Freightliner  
#7169G

STARTING AT **\$30<sup>00</sup>**

C. Freightliner  
#7197G

STARTING AT **\$31<sup>00</sup>**

D. Freightliner  
#7585G

STARTING AT **\$58<sup>00</sup>**



**T/CCI Compressor**

#5256

STARTING AT

**\$290<sup>50</sup>**



**Solenoid - Air Valve 12V**

#2003

STARTING AT

**\$70<sup>00</sup>**

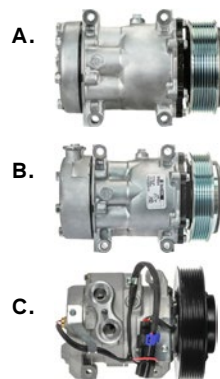


**Big Blu Leak Locator**

#8473

STARTING AT

**\$12<sup>00</sup>**



**A/C Compressor**

Freightliner  
#5333G

STARTING AT **\$236<sup>00</sup>**

Peterbilt  
#5362

STARTING AT **\$275<sup>00</sup>**

Freightliner  
#5405G

STARTING AT **\$282<sup>50</sup>**

Product availability may vary by location. We can source any item as needed and tailor inventory to meet the unique requirements of your fleet. Prices valid through 9/30/2025.



# HEAVY-DUTY HITTERS

## SUPPLIER SPOTLIGHT



Flexfab is a global manufacturer of high-performance silicone hoses, tubing, and ducting, known for its proprietary processes that ensure superior durability and custom solutions. Their expertise includes high-temperature silicone hoses and specially designed parts for demanding applications.

## FLEXFAB® TOP PRODUCTS



### 3-Ply Coolant Hose

1¾"  
#5515-175  
**STARTING AT \$17<sup>00</sup>**

2"  
#5515-200  
**STARTING AT \$19<sup>00</sup>**

2½"  
#5515-250  
**STARTING AT \$23<sup>50</sup>**

2¾"  
#5515-275  
**STARTING AT \$24<sup>00</sup>**

3"  
#5515-300  
**STARTING AT \$25<sup>00</sup>**



### Silicone Heater Hose

½"  
#5526-050X50  
**STARTING AT \$3<sup>00</sup>**

⅝"  
#5526-062X50  
**STARTING AT \$3<sup>50</sup>**

¾"  
#5526-075X50  
**STARTING AT \$4<sup>00</sup>**

1"  
#5526-100X50  
**STARTING AT \$5<sup>00</sup>**



### Lined Worm Gear Clamp

.63"/1"ID  
#FLX2582-0008  
**STARTING AT \$1<sup>50</sup>**

.75"/1.06"ID  
#FLX2582-0010  
**STARTING AT \$1<sup>60</sup>**

.88"/1.25"ID  
#FLX2582-0012  
**STARTING AT \$1<sup>65</sup>**

1"/1.5"ID  
#FLX2582-0016  
**STARTING AT \$1<sup>65</sup>**



### Charge Air Hose and Clamp Kit 4"X6"

#KIT4001D  
**STARTING AT \$62<sup>00</sup>**

Product availability may vary by location. We can source any item as needed and tailor inventory to meet the unique requirements of your fleet. Prices valid through 9/30/2025.



# HEAVY-DUTY HITTERS

## SUPPLIER SPOTLIGHT



Gates is a global leader in power transmission and fluid power solutions, driven by over a century of innovation in materials science to help machines run better and power the future.



## GATES® TOP PRODUCTS



### 3VX425 Super HC V Belt

#3VX425

STARTING AT

**\$18<sup>50</sup>**



### HD Belt Tensioner

#38702

STARTING AT

**\$111<sup>50</sup>**



### XL V-Belt

#9470

STARTING AT **\$16<sup>00</sup>**

#9510

STARTING AT **\$25<sup>50</sup>**



### FleetRunner V-Belt

#9470HD

STARTING AT **\$28<sup>00</sup>**

#9510HD

STARTING AT **\$35<sup>00</sup>**



### DriveAlign Belt Pulley

#36223

STARTING AT

**\$55<sup>50</sup>**



### HD Engine Water Pump

#46002HD

STARTING AT

**\$390<sup>50</sup>**



### HD Engine Water Pump

#44057HD

STARTING AT

**\$70<sup>50</sup>**



### HD Engine Water Pump

#46003HD

STARTING AT

**\$390<sup>50</sup>**



### HD Engine Water Pump

#43570HD

STARTING AT

**\$125<sup>75</sup>**



### HD Engine Water Pump

#44062HD

STARTING AT

**\$687<sup>00</sup>**

Product availability may vary by location. We can source any item as needed and tailor inventory to meet the unique requirements of your fleet. Prices valid through 9/30/2025.



# STORE LOCATIONS

## CALIFORNIA

### Traction

2571 S. Riverside Ave.  
Bloomington, CA 92316  
(909) 873-4265

### Traction

7305 Edgewater Dr.  
Oakland, CA 94621  
(510) 346-5515

### Traction

3027 E. Las Hermanas St.  
Rancho Dominguez, CA  
90221  
(310) 900-0440

## FLORIDA

### Global Parts

101 Ellis Rd. North  
Jacksonville, FL 32254  
(904) 781-9595

### Orlando Truck Parts

9633 Oak Crossing Rd.,  
Ste. 200  
Orlando, FL 32837  
(407) 438-1177

## GEORGIA

### Global Parts

2952 Moreland Ave.  
Conley, GA 30288  
(404) 363-4620 Ext. 1

### Global Parts

362 Industrial Blvd.  
Ringgold, GA 30736  
(706) 937-2787

### Global Parts

5218 Augusta Rd.  
Garden City, GA 31408  
(912) 544-0059

### Global Parts

2947 Highway 85  
Senoia, GA 30276  
(770) 599-3566

### Truck Parts Warehouse

422 Main St. SW  
Gainesville, GA 30501  
(770) 535-6050

## KENTUCKY

### Global Parts

4343 Sanita Ct.  
Louisville, KY 40213  
(502) 479-3315

## MAINE

### Traction

385 Rodman Rd.  
Suites 1 & 2  
Auburn, ME 04210  
(207) 786-2431

### Traction

72 Darin Dr.  
Augusta, ME 04330  
(207) 622-7174

### Traction

585 Coldbrook Rd.  
Hermon, ME 04401  
(207) 848-2203

### Traction

850 Central Dr.  
Presque Isle, ME 04769  
(207) 769-2141

### Traction

91 Waterville Rd.  
Skowhegan, ME 04976  
(207) 474-9587

## MICHIGAN

### Traction

1920 N. Opdyke Rd.  
Auburn Hills, MI 48326  
(248) 874-1570

### Traction

10336 Gratiot Ave.  
Columbus, MI 48063  
(586) 727-9955

### Traction

15970 Common Rd.  
Roseville, MI 48066  
(586) 779-4400

## NORTH CAROLINA

### Stone Truck Parts

5321 Gibbon Rd., Suite A  
Charlotte, NC 28269  
(704) 887-1111

### Stone Truck Parts

1120 US Hwy 70 W  
Garner, NC 27529  
(919) 772-4546

### Stone Truck Parts

8736 Triad Dr.  
Colfax, NC 27235  
(336) 544-0545

### Stone Truck Parts

716 N Norwood St.  
Wallace, NC 28466  
(910) 498-8460

## OHIO

### Traction

4015 Fondorf Dr.  
Columbus, OH 43228  
(614) 272-6644

## NEVADA

### Traction

4510 Mitchell St.  
N. Las Vegas, NV 89081  
(702) 643-7278





**TRACTION** 



**Global Parts, Inc.**



# GET SUPPORT THAT GOES THE EXTRA MILE.

We understand downtime means lost revenue. That's why our team of heavy-duty experts is committed to delivering fast, reliable service to keep your operations rolling without missing a beat.

## SERVICE CENTERS

### STONE TRUCK PARTS

#### *Truck Service*

1120 US HWY 70 W  
Garner, NC 27529  
(919) 772-4546

#### **SERVICES:**

Hydraulics  
Wetline Kits  
Air Conditioning  
Diagnostics  
Suspension  
Brake and Brake Components  
General Service  
DOT Inspection

### GLOBAL PARTS

#### *All Make Trailer Repair*

4343 Sanita Court  
Louisville, KY 40213  
(502) 479-3315

#### **SERVICES:**

Electrical  
Hydraulics  
Brakes  
Suspension  
Body





# START YOUR HEAVY-DUTY JOURNEY WITH US.

We're looking for motivated go-getters who are eager to dive into the heavy-duty trucking industry and make a real difference. If you're a problem-solver who thrives on challenges, takes initiative, and follows through, we want you on our team.

**SCAN THE QR CODE**  
to see our open positions.







**TRACTION**   
HEAVY VEHICLE PARTS

**WE'RE HERE FOR ALL OF YOUR  
HEAVY-DUTY SOLUTIONS.**